

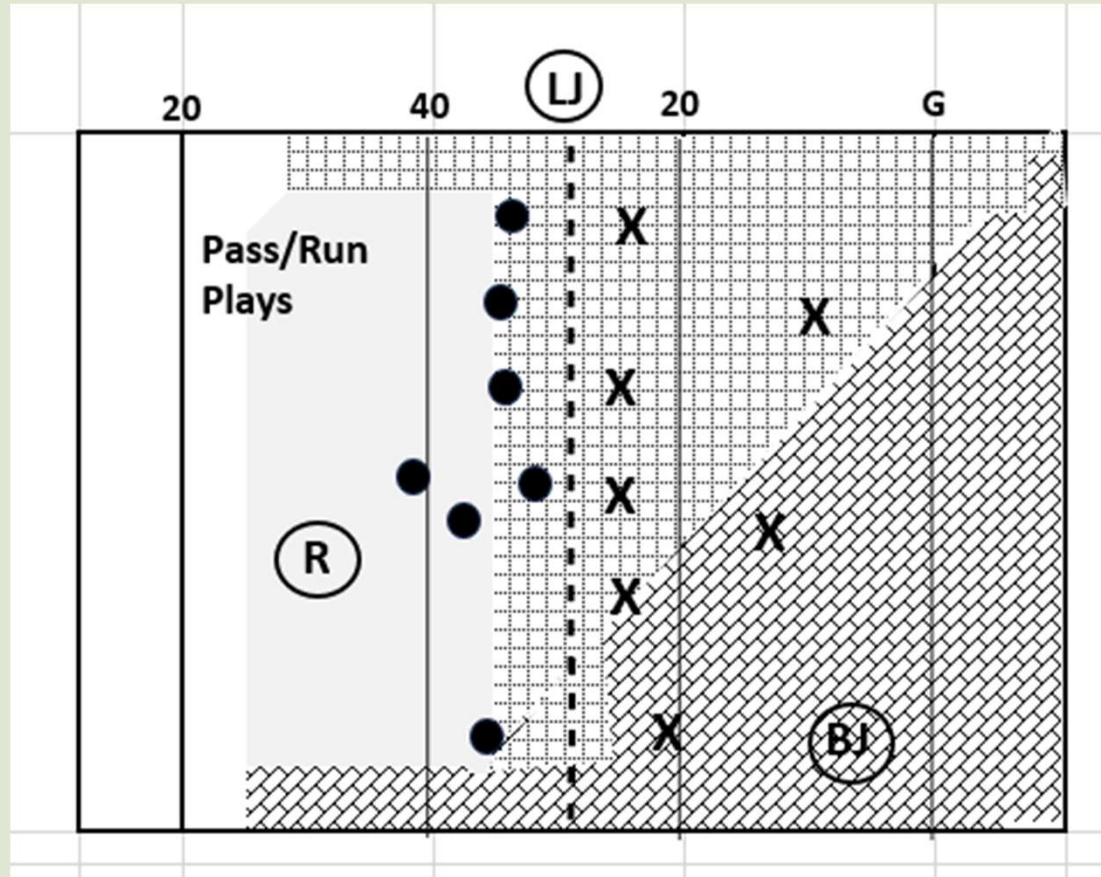


CO Flag Football Officials

3 Person Mechanics

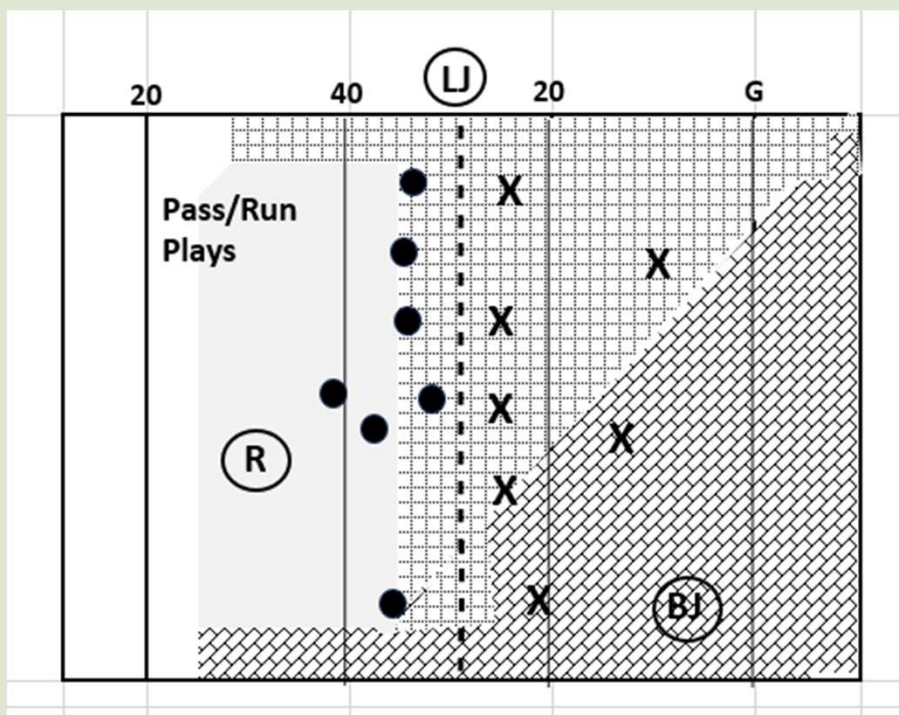


3 Person Mechanics





Referee – 3 Person

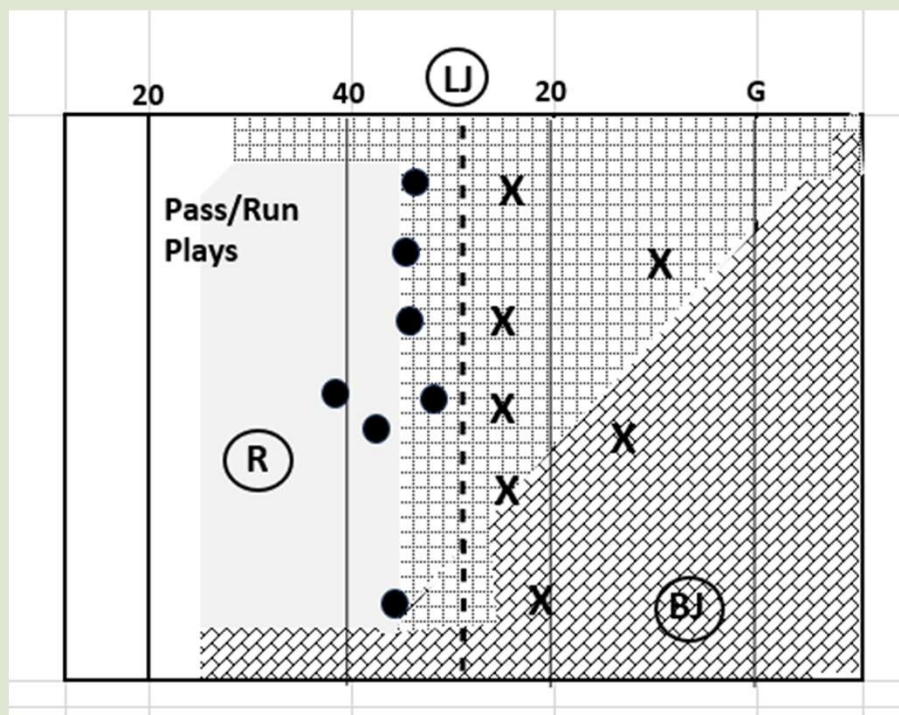


Referee

- Opposite side of the LJ
- Responsible for setting the line of scrimmage
- Responsible for RFP and 25 sec play clock
- Action in the back field
 - Blocks in backfield
 - Action on QB
- Support LJ with action across the LOS in the middle of field



Line Judge – 3 Person

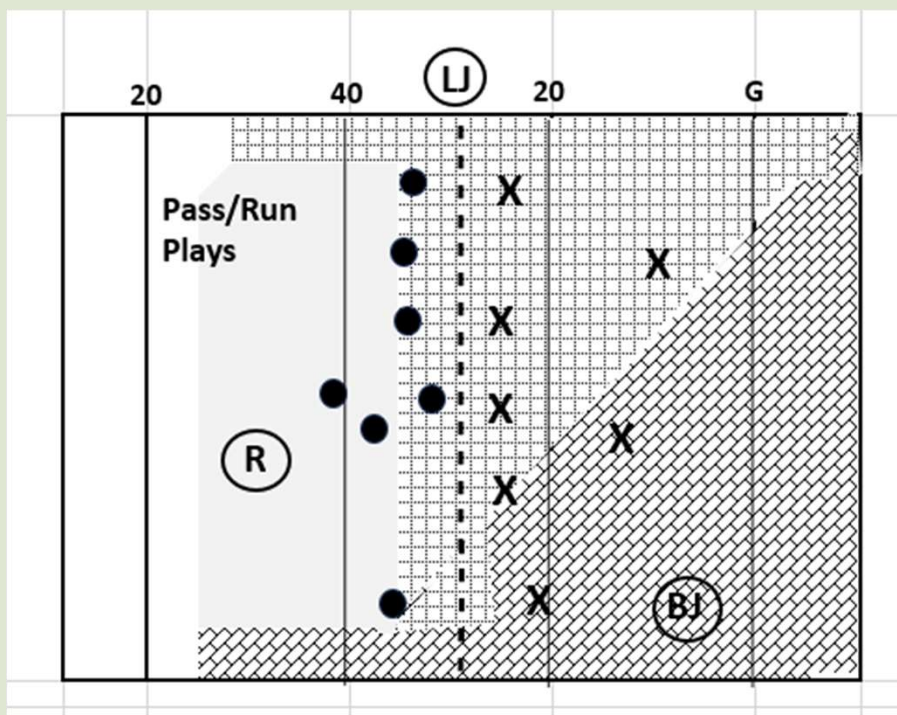


Line Judge

- Opposite side of the R
- Responsible for action on the line of scrimmage (O and D lines/Neutral Zone)
- Responsible entire sideline – end line to end line
- Responsible for down box operator
- Get spots – with help depending on situation



Back Judge – 3 Person

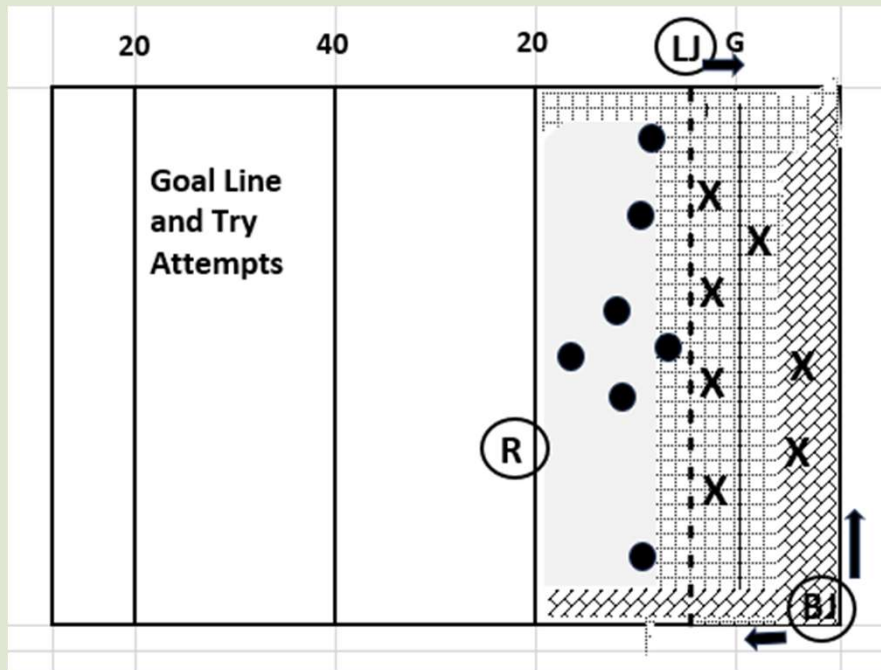


Back Judge

- Opposite side of the LJ – on the field near the sideline
- Responsible entire sideline – end line to end line
- Responsible for line to gain including goal line
- Responsible for action down field including end line
- Responsible for game clock
- Assist in spotting



Goal Line and Try Attempts

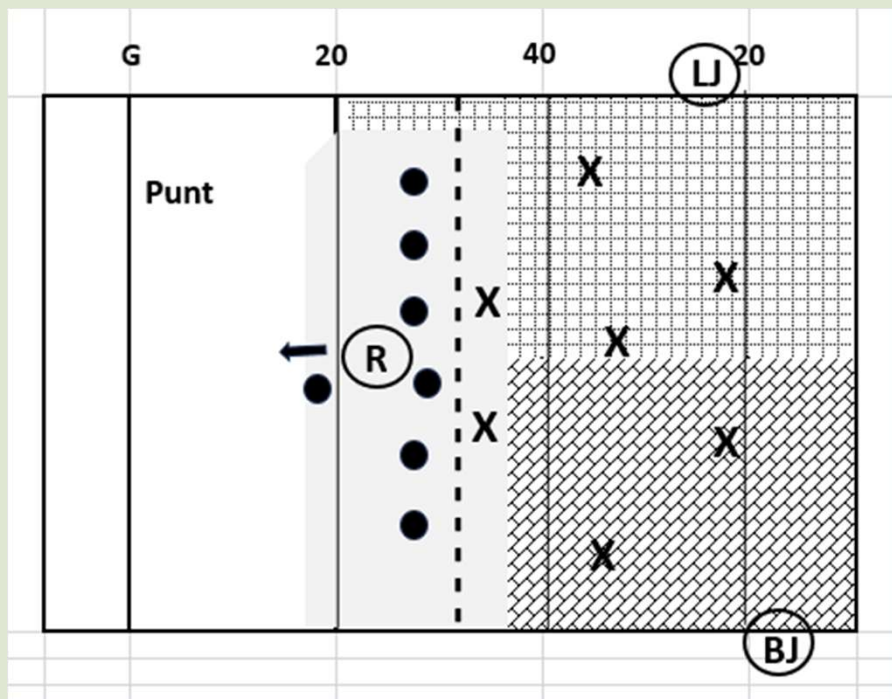


Positions and coverage responsibilities remain largely the same for all as scrimmage plays

- R no change to standard plays
- LJ must be ready to rule touchdown or forward progress short of the goal line (move off of LOS)
- BJ position starts on the end line and must be ready to rule touchdown or forward progress short of the goal line (move off of endline) and any out of bounds rulings (endline)



Punt Plays



Prior to all 4th down plays, R asks the coach if they are punting and communicate with both sidelines

- R will have responsibility for LOS and ensuring O does not leave early. Will drift back to support any out of bounds punts and returns.
- LJ (start downfield) and BJ have responsibilities (split the field) for ball status, returns, and determining the spot where the punt went out of bounds